

# Innovative Simplicity

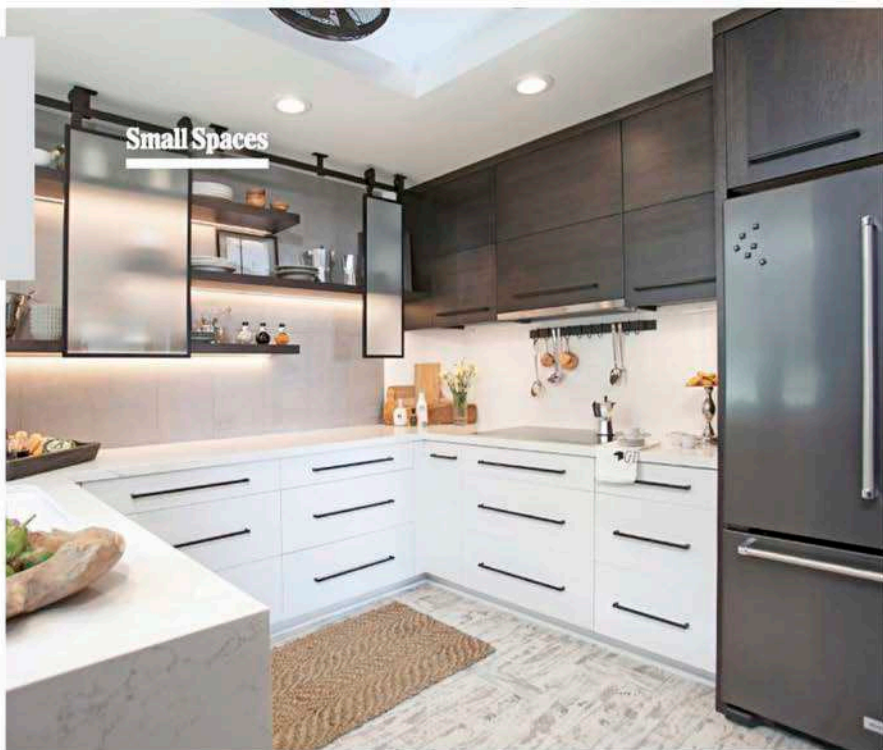
**A designer uses creative measures to instill light and elegance into a beach condo**

UPON RETIREMENT, ONE COUPLE MOVED from Arizona to a condo on the California coast where they could be closer to the ocean. Even though the location was ideal, the style was outdated and dysfunctional for their purposes.

"The clients wanted a much more modern style with a fresh attitude and elements reflecting their ocean view location," said Tatiana Machado-Rosas, design department head of San Diego, Calif.-based Jackson Design and Remodeling. Her colleague, Sol Quintana Wagoner, designed and led the project. "They also wanted two baths with tub and shower space to replace an existing powder room, which had no shower, and an [awkward master] bathroom."

## RETHINKING LAYOUT AND CABINETRY

In the kitchen, the homeowners particularly hoped for a modern design with an artistic sensibility. To lay out a more streamlined floor plan, space was borrowed from an adjacent laundry room; this created enough room for the oven and microwave to be installed flush with the wall. The sink was moved to the wall near the window to take advantage of the natural light and to allow for more efficient storage.



Small Spaces

**ABOVE** "The idea of balancing 'positive' and 'negative' concepts, such as the black-and-white color palette and the emphasis on contrasting natural and glossy materials, gives the small space artistic expression," said Machado-Rosas.

These sliding, frosted-glass panels can be positioned in a variety of ways to bring a touch of the artistic expression the homeowners were looking for into their new kitchen.

**LEFT** Another request was for a little industrial style. The sink faucet fulfills this with its slim, stainless-steel make and strong profile.

Using 20/20 and AutoCAD design software, the design team laid out an innovative storage system for the remaining space. Instead of installing the same upper cabinetry on every wall, the team decided to include a sliding-glass storage system on one wall to open up the space visually. These frosted-glass panels partially cover open shelving, which is laid out in a staggered pattern. The shelving also has undercabinet lighting to illuminate the small interior of the kitchen; the frosted panels both amplify the light and add an element of creative expression.

## THE ILLUSION OF SPACE

For the rest of the cabinetry, a modern, flat-panel design was chosen for the doors, but the color differs between the uppers and lowers.

"Keeping all of the bottom cabinetry white and all of the upper cabinetry dark perfectly balances the kitchen and amplifies a sense of expansiveness," said Machado-Rosas.

An 18-in. dishwasher was selected instead of the larger and more common 24-in. size, and the refrigerator was done in black stainless steel so it seems to blend in with the rest of the cabinetry. The hardware throughout is matte black, and the countertop is a contrasting white quartz to emphasize the black-and-white theme.

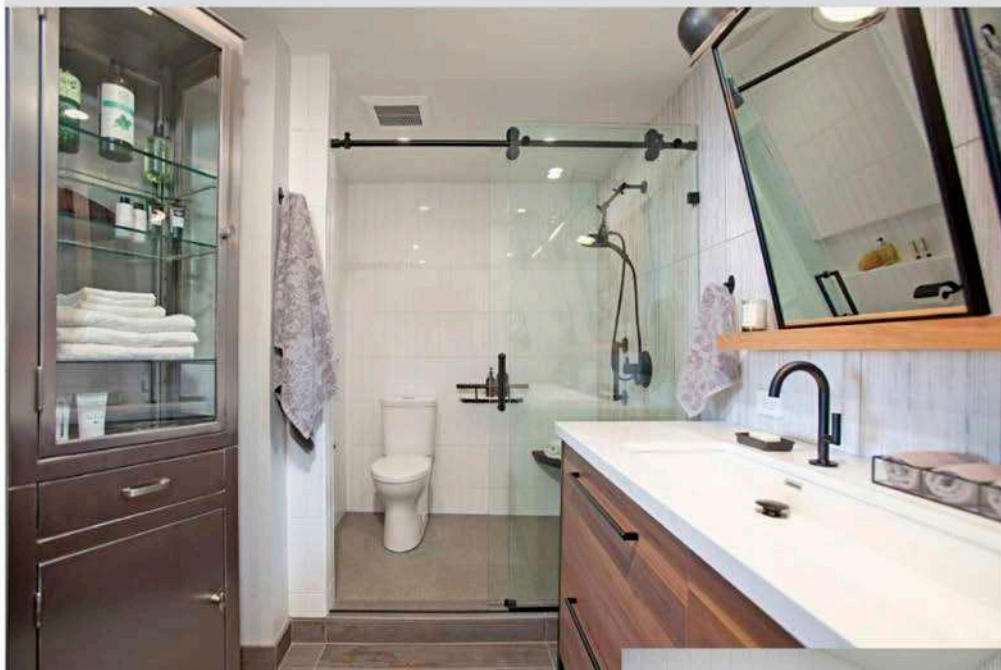
"In such a spare design, it was essential that each element be carefully selected to support the overall effect of chic simplicity," said Machado-Rosas. "Timeless black and white make the small kitchen feel large and welcoming."

A telescopic hood—designed to retract when not in use—and an induction cooktop save space in the small footprint. A hanging area for cooking utensils is situated on the wall tile behind the stove to preserve countertop space. In addition, a recessed area at the bottom of one wall of cabinetry provides a place for the family dog to have room to eat somewhat out of the way.

"In the new kitchen design, creative space planning, a restrained color palette and the use of reflective surfaces make the room feel much more expansive within the same footprint," said Machado-Rosas. "Even though the space is small, it looks interesting and inviting."

BY ERINN LOUCKS





**LEFT** In the master bathroom, adjustable industrial lighting illuminates the rich grain cabinetry trimmed in black.

**BELOW** The guest bathroom uses innovative touches like matte-black shelving and oversized geometric wall tiles to add elegance to the small space.

#### SPACE PLANNING IN THE BATHROOMS

The clients also wanted two full bathrooms in the condo. The powder room was intended for use as a guest bath in the new design, but it lacked a tub and shower. The existing master bathroom was narrow, with the toilet just inches from the tub, and the plumbing could not be moved because of the condo's building restrictions. The tub was deemed unnecessary in the master bath, so the space was allocated to the adjacent guest bath instead.

With this additional space, the team now had room for a tub/shower combo in the guest bath. Keeping the bottom of the vanity exposed also hints at the feeling of openness in the room, and oversized geometric wall tiles add textural interest without distracting from the bath's black-and-white palette.

For the master, the design team wanted to express the originality of the clients. To do this, they painted the edges of the walnut vanity black for a sleek, modern look. Different textures and colors of tile were used—one wall of tile with a distressed texture is balanced by another wall with a glossy sheen, and the flooring boasts an earthy color with penny tile.

The team also decided to think creatively when it came to the shower, transforming the entire back wall into a curbless shower with a barn-style, sliding-glass door. The toilet is situated inside the wet space on the opposite side of the shower fixtures.

"The clients appreciate the inventive use of space and now have all the elements they desire in both their guest bathroom and master bathroom," said Machado-Rosas.

#### SOURCES

**DESIGNER:** Sol Quintana Wagoner;  
**PHOTOGRAPHER:** Jackson Design and Remodeling

#### BATHROOMS

**BARN DOORS:** Contractors Wardrobe; **COUNTERTOPS:** Pentel Quartz; **FAUCETS & FIXTURES:** Brizo; **FLOORING:** Emser Tile & Mediterranean USA; **GUEST BATH VANITY:** Fairmont Designs; **LIGHTING:** Restoration Hardware;

**MASTER BATH VANITY:** DeWils; **MIRRORS:** DGM Custom Leaning Mirrors; **TILE:** ADEX USA, BAUTILE, Cepac Tile & Cinca; **TOILETS:** American Standard & DXV; **TUB:** Jacuzzi

#### KITCHEN

**CABINETRY:** DeWils; **CABINETRY HARDWARE:** Top Knobs; **COUNTERTOP:** Pentel Quartz; **DISHWASHER:** Bosch; **FAUCET, BLANCO;** **FLOORING:** Hampton Bay; **HOOD:** Zephyr; **INDUCTION STOVE, REFRIGERATOR & WALL OVEN:** KitchenAid; **SINK:** KOHLER

